

## Renumbering a runway in FS9/FSX/P3D using Airport Inspector and Editor (AIE)

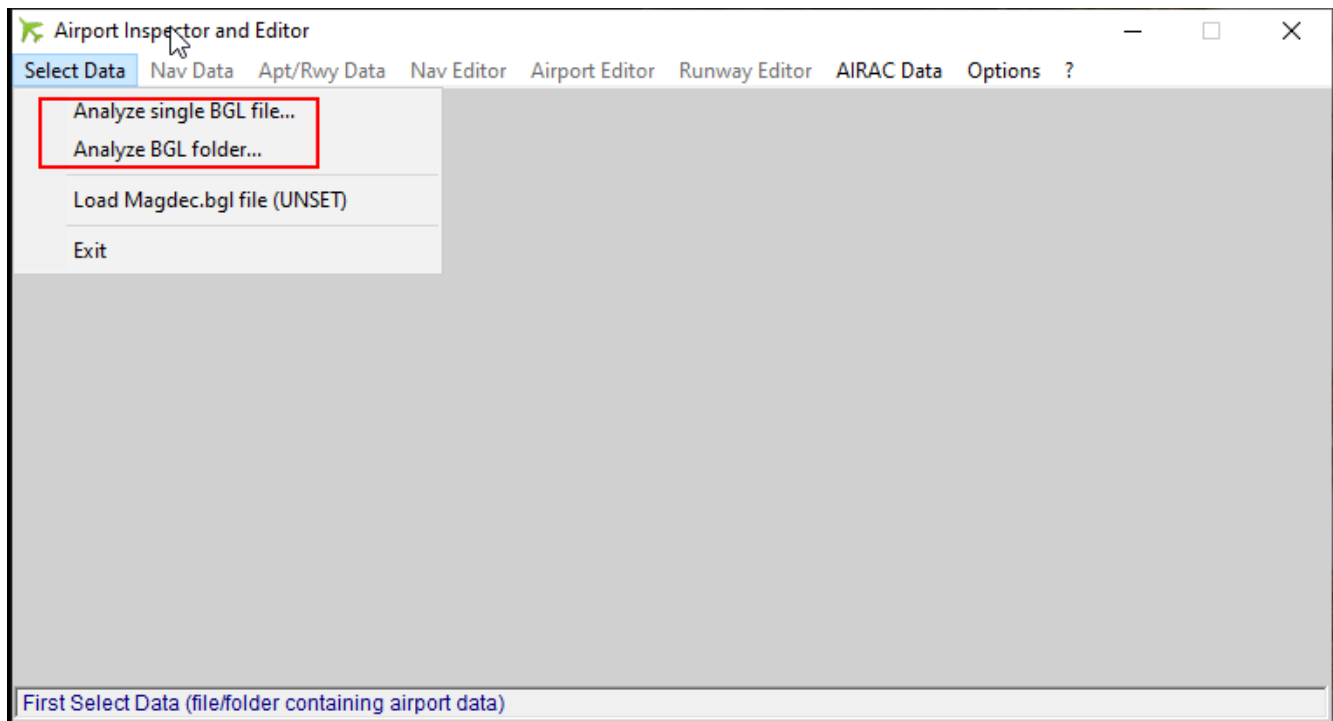
From time to time, runway identifiers are changed following an update of the airport reference magnetic variation. Here are the simple steps required for updating your scenery BGL files using [Airport Inspector and Editor](#) (AIE) providing a number of advantages as follows:

- Compatibility with any sim version from FS9 to P3Dv6
- No need to decompile/recompile BGL files,
- Simple 3 steps process using a single application,
- Automatic renumbering of associated taxi signs when they exist,
- Automatic renumbering of ILSs, associated approaches and waypoints.

### Step 1

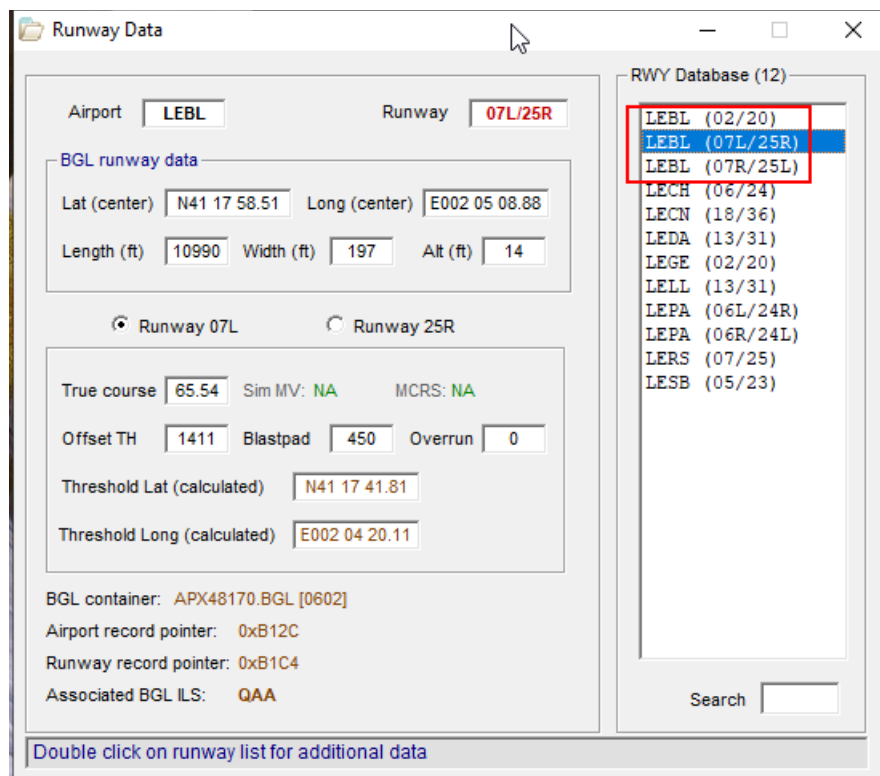
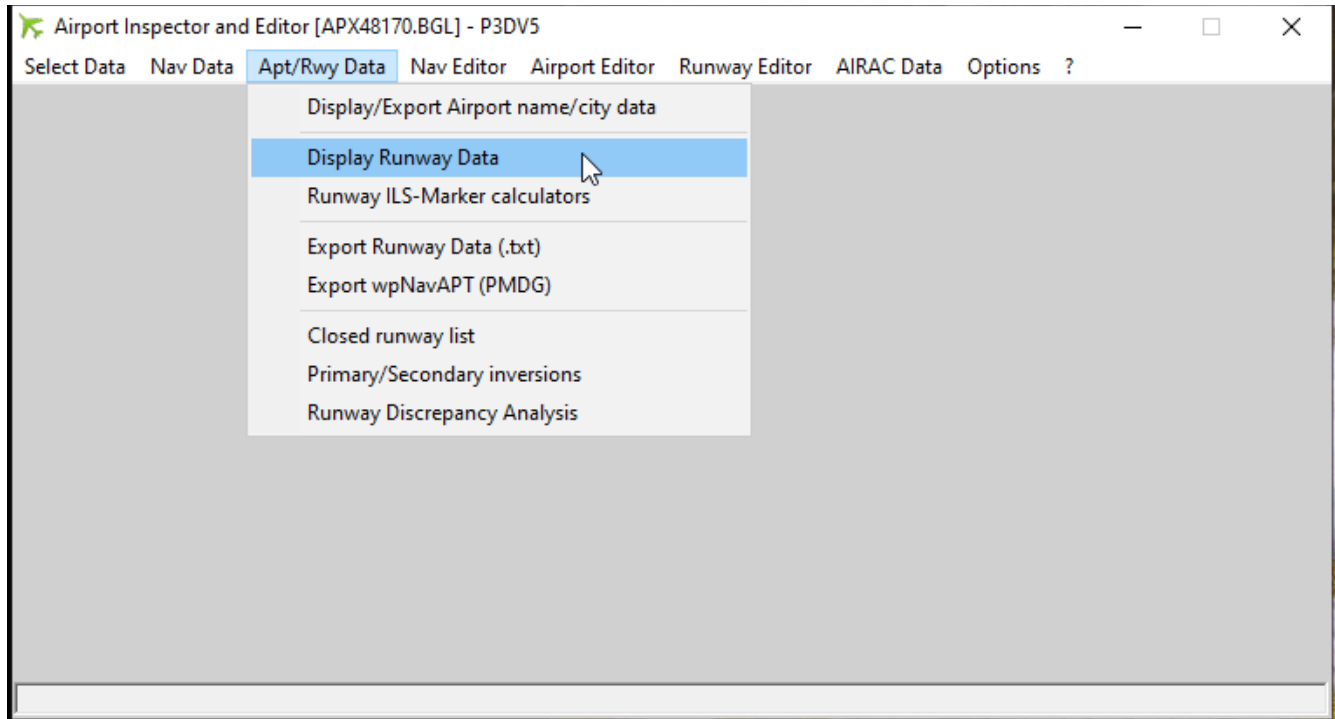
After launching AIE, use the **Select Data menu** and load the BGL file that contains the airport for which you want to change runway identifiers. Options are:

- either **Analyze single BGL file** if you already know which BGL file contains the airport data,
- or **Analyze BGL folder** if you only know in which folder search must be performed,



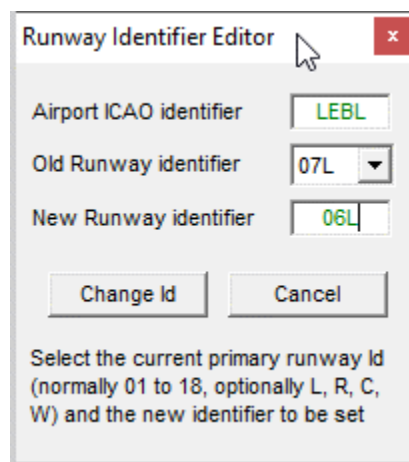
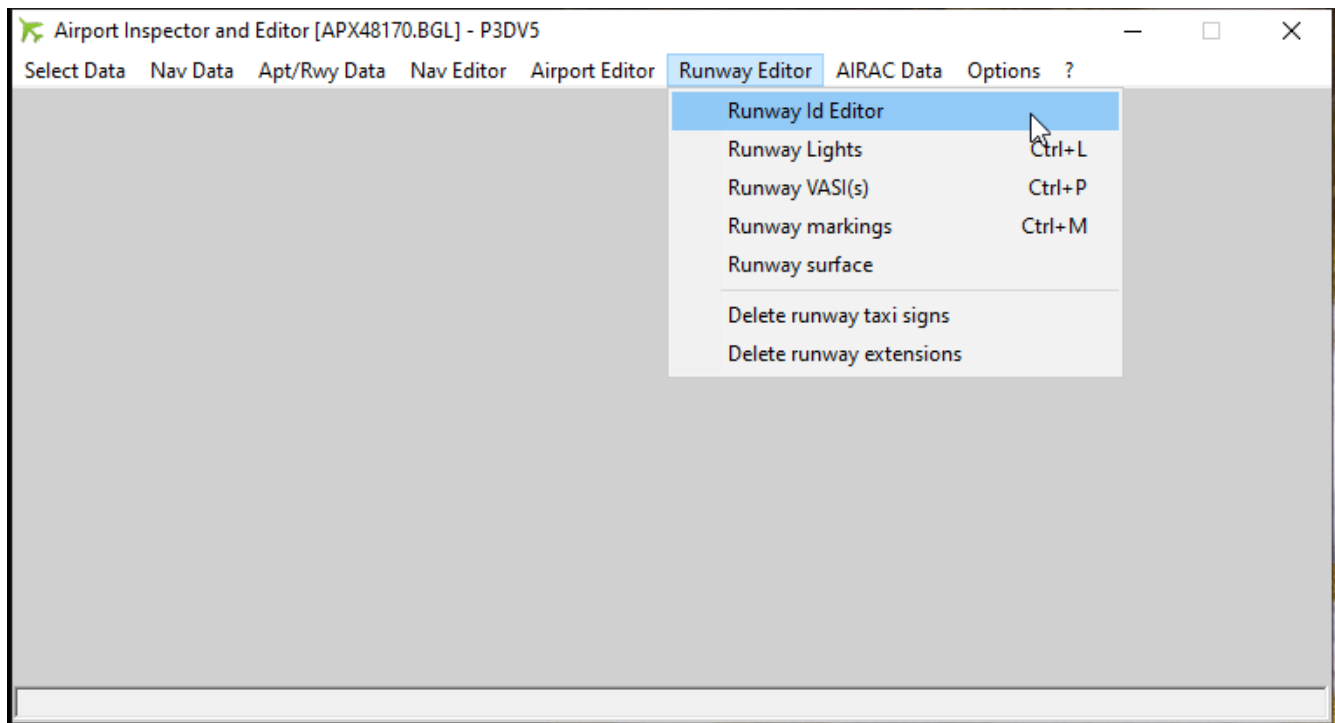
## Step 2

After BGL data have been loaded, check that the required airport is present in the selection by going to the **“Apt/Rwy Data-Display Runway Data”** menu. If it is not, it means the BGL selection was not appropriate.



### Step 3

Renumber runways using the **Runway Editor – Runway Id Editor** menu entering



After the Change Id button is pressed, a backup confirmation of the original BGL file will be issued. Also, a warning for ILS name change to be performed may be displayed (see optional step)

Process must be repeated for each runway to be renumbered (here 07L to 06L then 07R to 06R)

#### Step 4 (optional)

In case one or several ILSs are associated to the renumbered runways, an additional step is required so as ILS names are correctly displayed (other ILSs parameters are automatically adjusted and do not need any specific action).

- 1- Display the ILS Data using the **NavData-Display ILS Data** menu

The screenshot shows the 'ILS data' window. The main panel displays the configuration for ILS 'BCA' (Name: CAT III ILS/DME 25R, Frequency: 109.50, MV: E0.0, BC checked). It includes sections for Localizer, Glide slope, and DME, each with latitude, longitude, altitude, and range fields. At the bottom, it shows the associated airport (LEBL [24R]), BGL container (APX48170.BGL [0602]), and BGL pointer (0x3CD9C). On the right, the 'ILS Database (12)' panel shows a list of ILSs with 'Airport' selected. The list includes LEBL (BCA), LEBL (BLE), LEBL (BLT), LEBL (BLW), LEBL (QAA), LECH (ICN), LEDA (ILL), LEGE (IGN), LEPA (IPAL), LEPA (PAA), LEPA (PLM), and LERS (IRS). The first five items are highlighted with a red box.

- 2- In the ILS Database list on the right, double click on each ILS that has to be renamed. [Here we are only concerned with BCA, BLE, BLW and QAA]  
*Disregard the One-Time information that doesn't apply here.*

In the ILS Edition window that opens (see below), the ILS name should already be corrected. If not:

- To be conservative, check the "Do not update/create associated scenery objects" so as associated ILS objects are not relocated (normally they won't),
- Double click the name label and correct the ILS name,
- Then click the Commit changes button.

Repeat this procedure for all affected ILSs

[Note: you may also wish to change the ILS magnetic variation (MV) since it probably changed, the reason why runways were renumbered]

ILS Edition

Airport   Identifier

Cat   ☒ gs ☒ dme ☒ bc

Name

LOC frequency, true course and mag var

Freq  Course  MV

Localizer coordinates

Lat  Long

Beam width   Range

Glide transmitter

Lat  Long

DME

Lat  Long

Calculation options (from AIRAC data)

☐ Align LOC ☐ From OTH ☒ From TH

☐ Raw AIRAC coordinates

☒ Do not update/create associated scenery objects

SCO objects ☒ LOC ☒ TR ☒ GS

LOC transmitter ☐ Right ☒ Left  ft

Work completed..

Latest version of AIE [here](#)

NOTE: Technically, renumbering a runway in a scenery BGL is a rather complex procedure requiring changes in several sections:

- Airport record: runway designators, start positions, taxiway paths, approaches
- Airport summary record
- Waypoint section
- Scenery objects (associated taxi sign record)
- Nav section (ILSs)

If length of some text records change (e.g 06 ->06L) a full rebuilt and reindexing of BGL file sections is usually required, maintaining WORD or DWORD alignments.